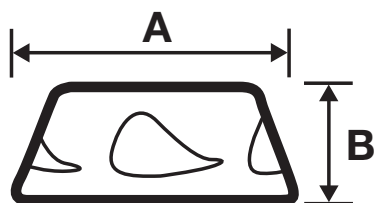


## Kinmar<sup>®</sup> Removable Nut - A2 Stainless Steel



### Dimensions (mm)

SIZE	M5	M6	M8	M10	M12
DIMENSIONS					
A	12.1	12.1	16.1	20.1	24.2
B	5.6	5.6	7.3	9.2	10.6

### Material and Finish

**Material:** A2 (304cu) Stainless Steel  
**Heat Treatment:** None  
**Finish:** Self Colour

A2  
Stainless  
Steel

### Part Numbers & Driver Sizes

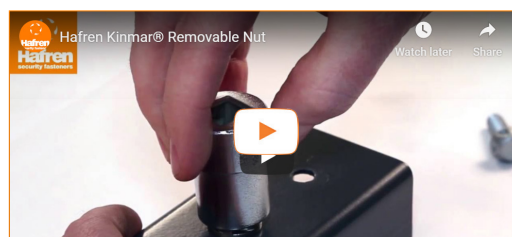
SIZE	M5	M6	M8	M10	M12
MATERIAL					
PART NUMBER	KMRN05-S	KMRN06-S	KMRN08-S	KMRN10-S	KMRN12-S
DRIVER SIZE	KM05R	KM06R	KM08R	KM10R	KM12R

### Additional Information

**Patented Product:** Hafren Fasteners

**Installation:** Kinmar<sup>®</sup> Driver Socket - see video

**Removal:** 2-Way Removable



Every effort has been made to ensure the accuracy of information provided in this datasheet. Hafren Fasteners cannot warrant the information however, expressly or implied, and any liability arising from it is expressly excluded. Customers must satisfy themselves as to the suitability of products and the technical information relating to them, and it is recommended that you conduct your own tests to establish suitability. All sizes shown are in mm without min and max tolerances and are guide sizes. Hafren Fasteners reserve the right to change/alter sizes without notice. This does not effect your statutory rights.