

Decking Fixings by Lindapter®

Lindsay House, Brackenbeck Road, Bradford, West Yorkshire, BD7 2NF / T: +44 (0) 1274 521 444 / enquiries@lindapter.com / www.Lindapter.com

On-site pull tests

Lindapter's Engineers can provide tensile tests on the full range of decking fixings. Available on request and subject to application.



Installation videos

Videos of decking fixings and other Lindapter products can be viewed online at www.Lindapter.com

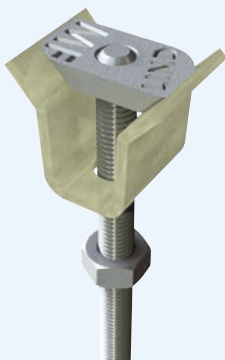


Lindapter Decking Fixing

Type TR60



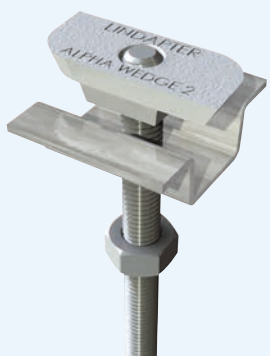
Type MF



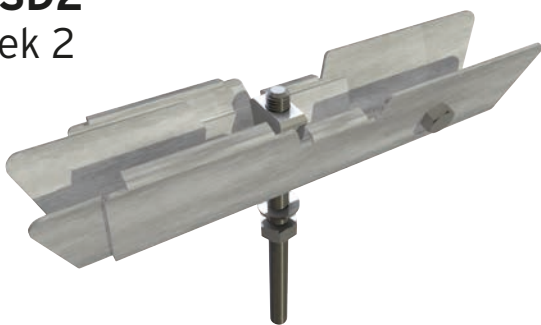
Type MW2 Multiwedge 2



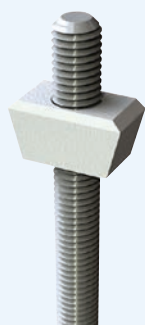
Type AW Alphawedge



Type SD2 Slimdek 2



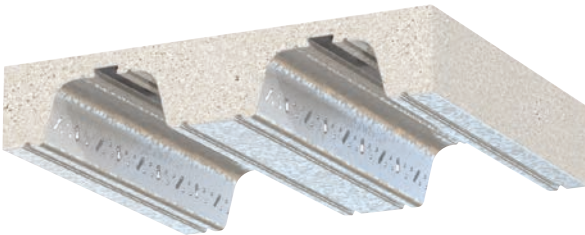
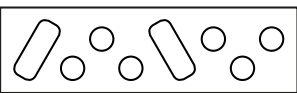
Type VN



Compatible Composite Decking Profile(s)

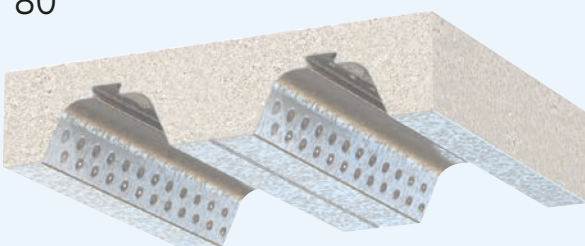
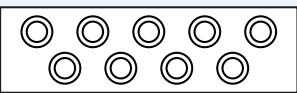
Structural Metal Decks (SMD)

TR60+ and TR80+



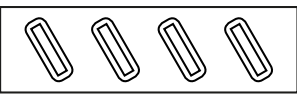
Composite Metal Flooring (CMF®)

MetFloor® 60 and MetFloor® 80



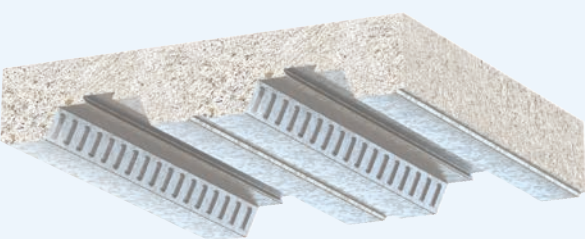
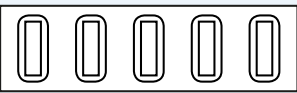
Kingspan® Structural Products

Multideck® 60 and Multideck® 80



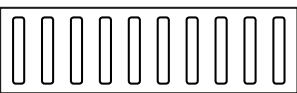
Hare Decking (formerly Richard Lees®)

Ribdeck® E60



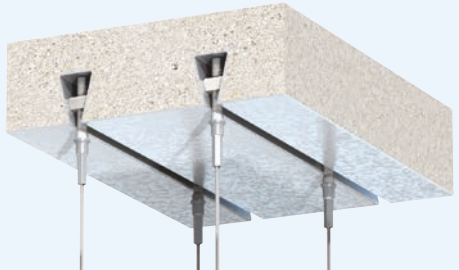
Tata Steel® Europe

ComFlor® 225



Fits several profiles including:

R51 (SMD), ComFlor® 51 (Tata Steel®), Holorib® (Hare Decking), Superib® (Hare Decking), Multideck® 50 (Kingspan®) and MetFloor® 55 (CMF®).

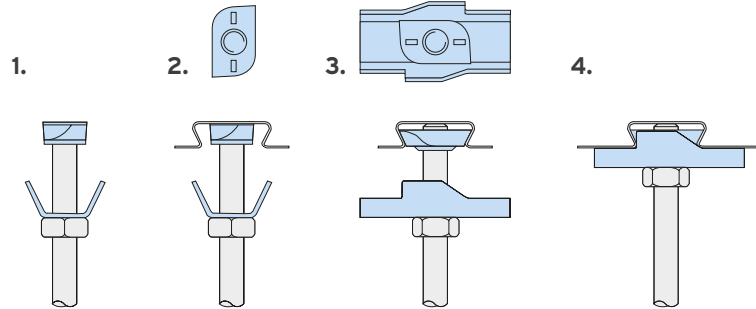


Step-by-Step Installation

- Install the decking fixings after the concrete has been poured and has reached full strength.
- If the decking profile is deformed or distorted, do not install the fixing. If in doubt, contact our Technical Support team for advice.

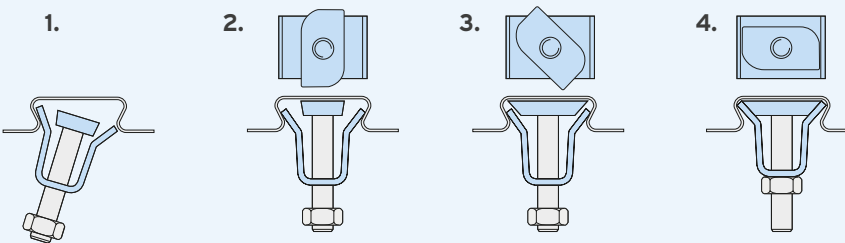
Type TR60

- Pre-assemble the locking plate and wedge (flat surface up) onto the threaded rod.
- Insert the wedge into the re-entrant channel of the decking.
- Rotate until the chamfered cams engage on the sides of the channel.
- Slide the plate up the threaded rod and over the wedge to lock it into position in the channel. Tighten the locknut beneath the plate to hold the assembly in position.



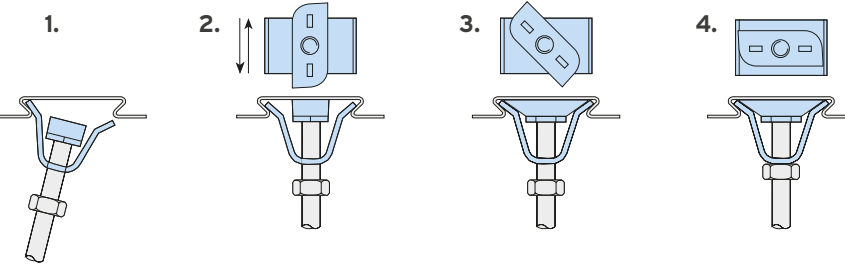
Type MF

- Pre-assemble the bracket and wedge (flat surface facing up) onto the threaded rod and insert one side of the bracket into the re-entrant channel of the decking.
- Insert the other side of the bracket into position inside the decking.
- Turn the wedge clockwise until the position in Fig. 4 has been achieved.
- Tighten the nut on the rod to a torque of 10Nm (prevent rod from rotating).



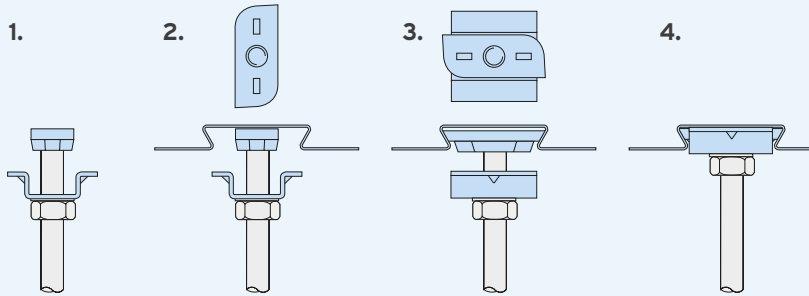
Type MW2 - Multiwedge 2

- Pre-assemble the bracket and wedge (flat surface facing up) onto the threaded rod and insert one side of the bracket into the re-entrant channel of the decking.
- Click the other leg of the bracket into position inside the decking and slide the assembly to the desired position along the length of the re-entrant channel.
- Push and turn the wedge clockwise until it locks into the channel walls.
- Tighten the hexagon nut beneath the assembly.



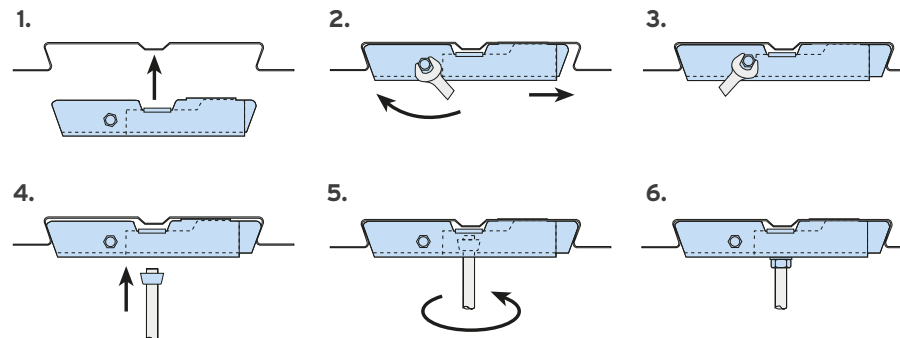
Type AW - Alphawedge

- Pre-assemble the locking plate and wedge (flat surface up) onto the threaded rod.
- Insert the wedge into the re-entrant channel of the decking and rotate 90°.
- Slide the plate up the threaded rod, over the wedge, to lock it in position into the channel.
- Tighten the locknut beneath the plate to hold the assembly in position.



Type SD2 - Slimdek 2

- With the SD2 in its retracted position (as supplied) locate the fixing in the re-entrant channel.
- Hold SD2 in position and rotate the cam nut anti-clockwise with a spanner.
- Tighten the cam nut until the inner body of the fixing locates against the re-entrant channel.
- Offer the V-Nut on a threaded rod up to the main body.
- Rotate the V-Nut through 90° so it sits at the bottom of the SD2 body.
- Secure the assembly with a nut.



Type VN - V-Nut

- Screw V-Nut (VN) onto threaded rod.
- Insert VN and rod into decking channel.
- Rotate rod and VN through 90° so the tapered edges engage the re-entrant channel sides.

