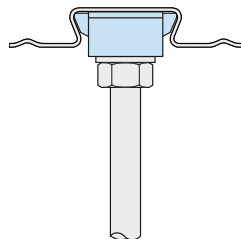


Type AMD

Suitable for AMD60 and AMD80 decking profiles manufactured by Anglian Metal Deck.



Locking Plate: Pre-galvanised strip.
Wedge: Malleable iron, bright zinc plated.



Product Code	Rod min 4.6	Safe Working Load (FOS 3:1)	
		Tensile / 1 Rod kN	Tightening Torque Nm
AMD06	M6	1.0	10
AMD08	M8	1.0	10
AMD10	M10	1.0	10

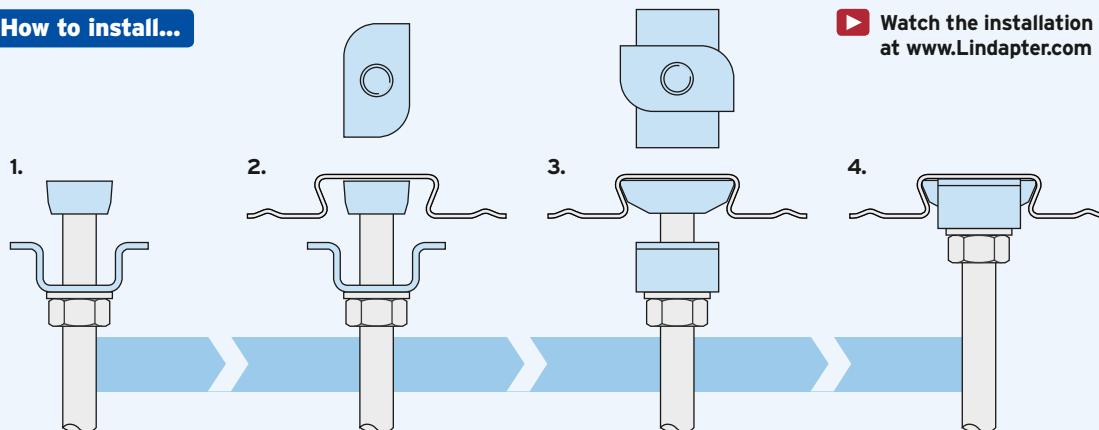
➤ Although the Type AMD is similar in appearance to the Type AW, it should NOT be used in profiles manufactured by Hare Decking.



How to install...



Watch the installation video at www.Lindapter.com



- 1) Pre-assemble the locking plate and wedge (flat surface facing up) onto the threaded rod.
- 2) Insert wedge into the re-entrant channel of the decking, rotate 90°.
- 3) Slide plate up the threaded rod, over the wedge, to lock it in position into the channel.
- 4) Tighten the locknut beneath the plate to hold the assembly in position.

➤ Install the decking fixings after the concrete has been poured and has reached full strength.

➤ If the decking profile is deformed or distorted, do not install the fixing. If in doubt, contact the Technical Support team for advice.



For Characteristic Resistances when designing a connection to Eurocode 3, please refer to DoP No.018 on the website www.Lindapter.com/About/CE

